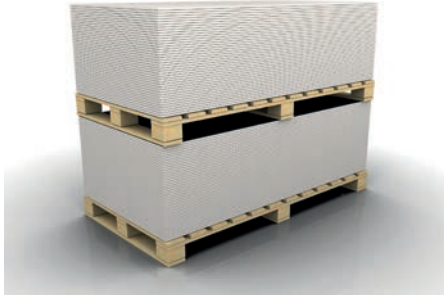




**Kalsi** boards are manufactured from a precise combination of cement, silica and cellulose, that are cured and stabilized in autoclave (special process involving steam, high temperatures and pressure) ensuring optimum mechanical resistance and extreme durability against fire, moisture and impact.

## STORAGE & HANDLING



- Stack on a level surface.
- Avoid one single stack of boards; an intermediate pallet every 1000mm height approximate helps maintain the flatness and integrity of the boards.
- Store under cover and protected from the weather.



- Avoid dragging sheets; lift them off the stack.



- Carry on edge but do not store on edge.

## GENERAL PROPERTIES

Physical and Mechanical Properties	Value	Standard
Dimensional conformity <ul style="list-style-type: none"> <li>• Thickness</li> <li>• Length</li> <li>• Width</li> <li>• Straightness of edges</li> <li>• Squareness of edges</li> </ul>	Level II (Pass)	ISO 8336
Density	≥1250 kg/m <sup>3</sup>	ISO 8336
Moisture content	10 - 15%	ASTM C1185
Water absorption	33 ±2%	ASTM C1186
Moisture movement	≤ 0.04%	ISO 8336
Water permeability	Pass	ISO 8336
Thermal conductivity	0.25 W/mK	ISO 8336
Modulus of rupture <ul style="list-style-type: none"> <li>Category A (saturated condition)</li> <li>Category C (ambient condition)</li> </ul>	≥7MPa ≥10MPa	ISO 8336

Durability		
Warm water performance	Pass	ISO 8336
Soak-dry performance	Pass	ISO 8336
Freeze-thaw performance (category A)	Pass	ISO 8336
Heat-rain performance (category A)	Pass	ISO 8336

Reaction to Fire		
Non-combustibility	Non-combustible	BS 476 Part 4:1970
Surface spread of flame	Class 1	BS 476 Part 7:1997
Fire propagation index	I = 2.3 i(1) = 2.1 i(2) = 0.1 i(3) = 0.1	BS 476 Part 6:1989

Unit 19-02-01  
Level 2 Wisma Tune  
No.19 Lorong Dungun  
Damansara Heights  
50490 Kuala Lumpur  
Malaysia  
Tel: +60 (3) 2095 5111  
Fax: +60 (3) 2095 6111  
Email: info@kalsi-building-solutions.com  
www.kalsi-building-solutions.com

## Your local supplier



© Etex APAC, 2019-11



Etex is a Belgian industrial group manufacturing and selling building materials. Its core businesses are:

- Etex Building Performance: plasterboards, plasters and formulated products, fibre cement boards, passive fire protection and associated products, and dry construction solutions.
- Etex Façade: architectural and residential fibre cement cladding boards.
- Etex Industry: high performance insulation and fire protection solutions for industrial players, such as the oil & gas sector.
- Etex Roofing: roof systems, slates, tiles and corrugated sheets, and roofing components.

With about 15,000 employees working at 107 production sites in 42 countries, and with annual sales of almost 3 billion euro, Etex is an international player in sustainable building solutions. In Belgium, in addition to its headquarters, Etex operates three production sites and two R&D centres. For more information, please visit our website: [www.etexgroup.com](http://www.etexgroup.com).

Etex Building Performance is all about the best combination of technologies, expertise, know-how and technical support making it the best choice in building materials for all kinds of projects where Dry Construction is a must, from the simplest ones to the most engineered solutions.



etex in the world



Etex Factory



# KalsiCeiling

3.2 / 3.5mm

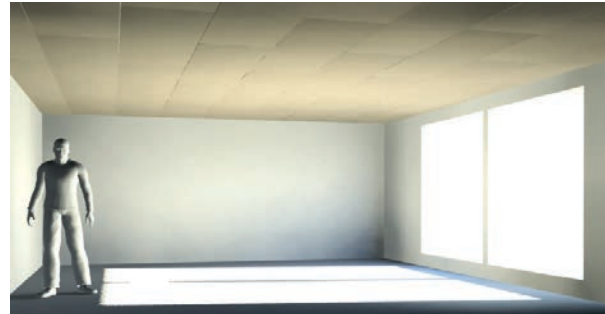
The most affordable ceiling.

**KalsiCeiling** is a building board designed especially for ceiling applications in both wet and dry areas. When in contact with water **KalsiCeiling** remains stable and does not decay.



## RECOMMENDED APPLICATIONS

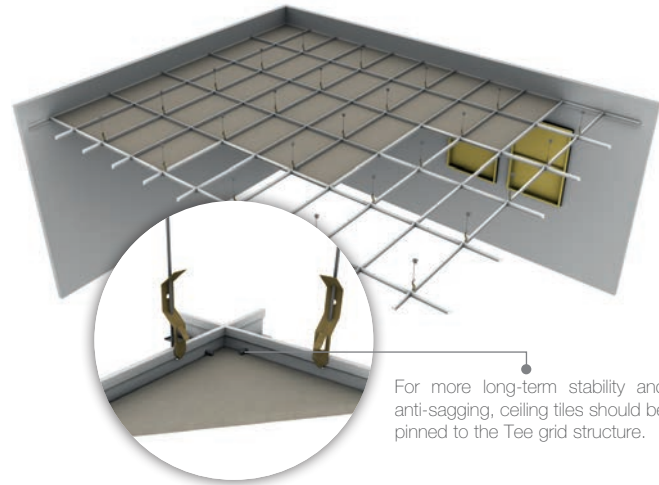
- Residential ceilings in dry and wet areas.



## RECOMMENDED APPLICATIONS

- Suspended modular ceiling tiles.
- Commercial and institutional ceilings.

4.5mm



For more long-term stability and anti-sagging, ceiling tiles should be pinned to the Tee grid structure.

# KalsiCeiling

6.0mm

When best finish surface should meet best impact resistance and moisture resistance, **KalsiCeiling** is the most efficient solution.

## RECOMMENDED APPLICATIONS

- Concealed joint ceilings in commercial and institutional projects.



## STANDARD DIMENSIONS

Thickness (mm)	Width (mm)	Length (mm)	Weight per m <sup>2</sup> of sheet (kg/m <sup>2</sup> )
3.2	603	1213	4.54
	1220	1220	
3.5	1220	1220	4.97
	1200	2400	
	1220	2440	
4.5	1220	1220	6.39
	1200	2400	
	1220	2440	
6	1200	2400	8.52
	1220	2440	
	1200	2700	
	1200	3000	

\* Other dimensions are available upon request. The properties in above table are mean values provided for informational purposes only.

# KalsiPartition

8.0 / 9.0mm

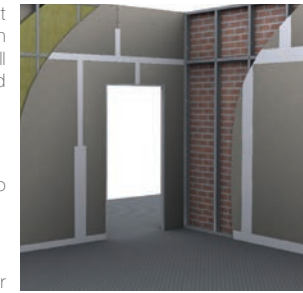
Impact and moisture resistant **KalsiPartition** is the ideal solution for the most demanding internal wall subjected to high traffic or humid conditions.

## BENEFITS

- Extra smooth surface ready to receive a wide range of finishes
- Impact resistant
- Resistant to termites and other insects
- Fast installation (compared to brick wall)
- Up to 10 times lighter than brick wall

## RECOMMENDED APPLICATIONS

- Partitions in wet areas like industrial kitchens, labs, washrooms and bathing areas, and in high traffic locations of hospitals, corridors, shopping centres and schools etc.



# KalsiPlank

7.5 / 9.0mm

**KalsiPlank** are fibre cement strips ideal for cladding applications. It provides the texture and similar aesthetic appearance of traditional timber but without the major disadvantages of wood.

## BENEFITS

- Moisture and water resistant
- Resistant to termites and other insects

## RECOMMENDED APPLICATIONS

- Fascia, eaves and façades renovations.

## STANDARD DIMENSIONS

	Thickness (mm)	Width (mm)	Length (mm)	Weight per m <sup>2</sup> of sheet (kg/m <sup>2</sup> )
<b>KalsiPlank</b>	7.5	230	3660	9.00
<b>KalsiPlank Cedar</b>	9.0	230	3660	10.80

\* Other dimensions are available upon request. The properties in above table are mean values provided for informational purposes only.



# KalsiClad

10 / 12mm

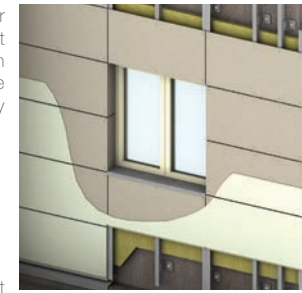
**KalsiClad** is specifically designed for external wall cladding. Its low weight and versatility make it a best solution for new or renovation projects where adaptability and modern, contemporary looks are required.

## BENEFITS

- Waterproof
- Durable
- Resistant to rot, termite and insect attack
- Easy to install

## RECOMMENDED APPLICATIONS

- Overcladding, floating façades and confined façades.



# KalsiFloor

15 / 18 / 20mm

**KalsiFloor** is a strong fibre cement substrate suitable for internal flooring applications. **KalsiFloor** can be directly finished (with carpet or vinyl tiles) in residential and light traffic locations, or with a reinforced concrete layer in special industrial applications.

## BENEFITS

- Fast installation
- Light weight
- Durable
- Moisture resistant

- Resistant to termites and most insects

## RECOMMENDED APPLICATIONS

- Lightweight flooring renovations, mezzanines.

